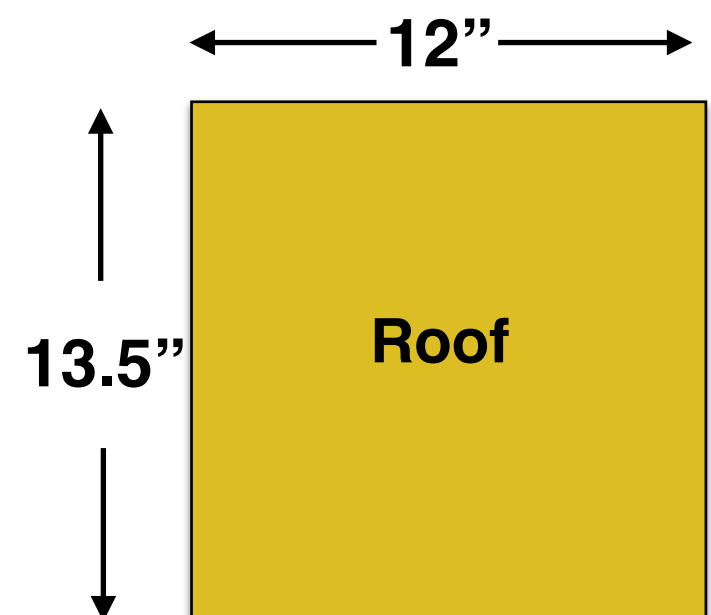
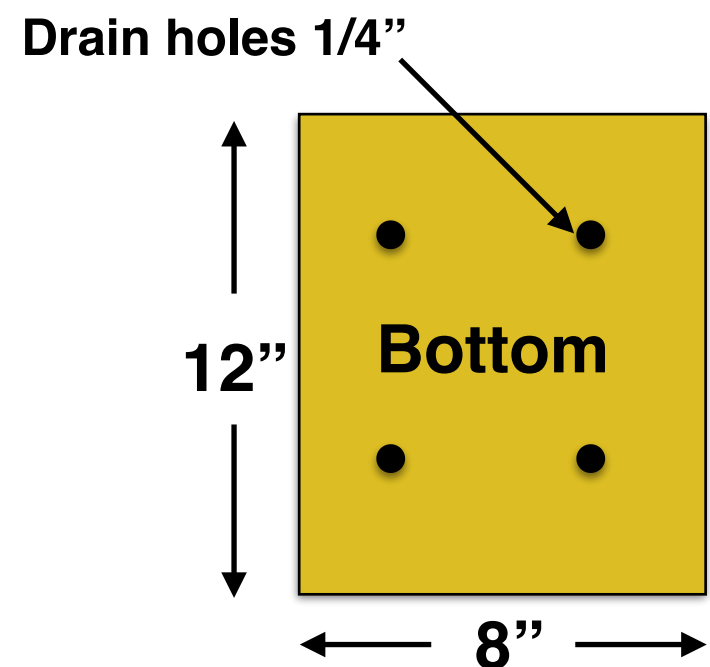
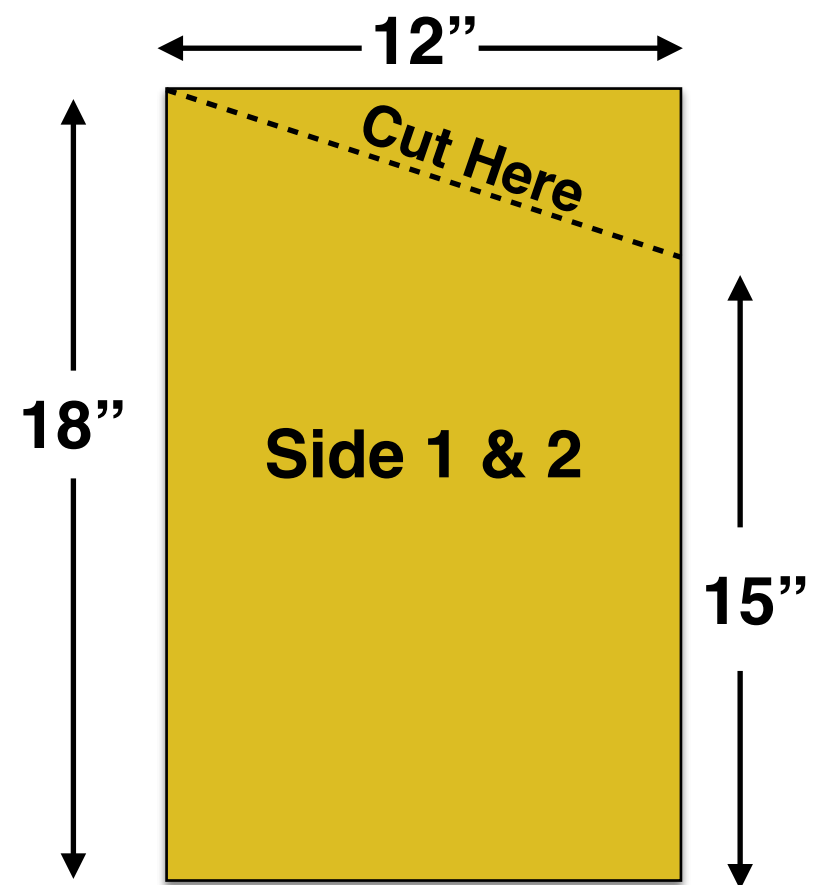
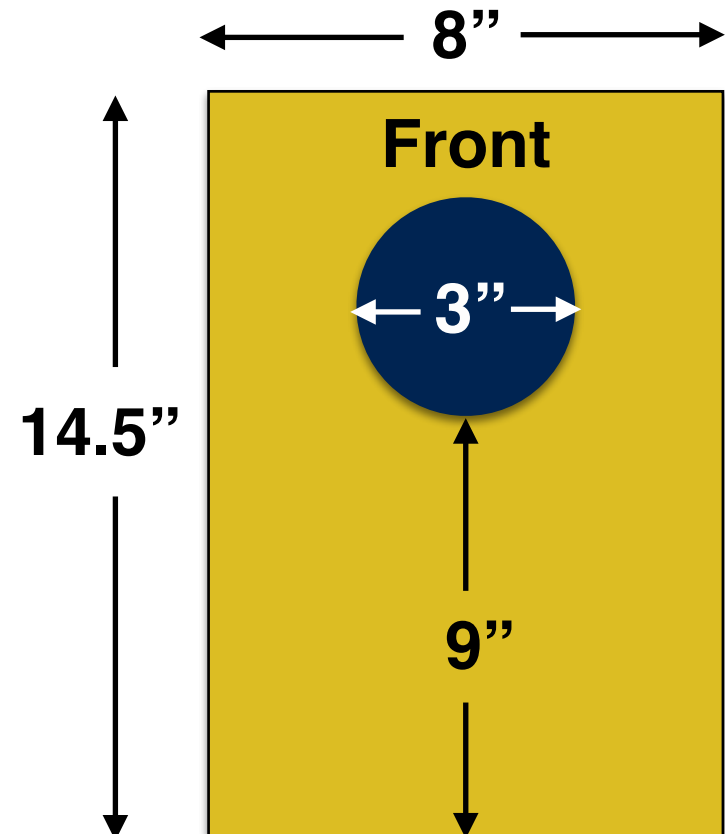
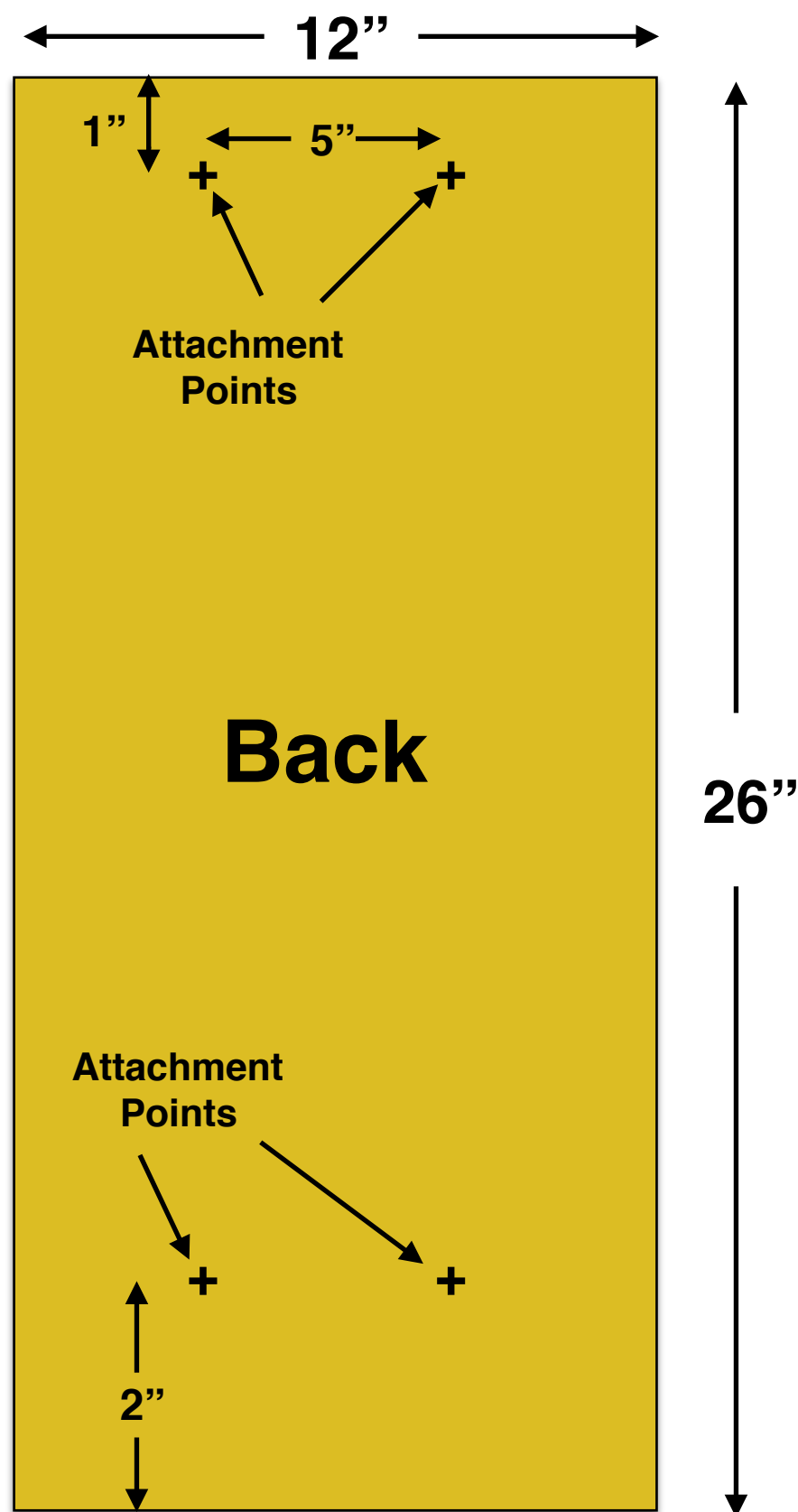


Eastern Screech Owl Box

(Not to Scale) Produced by Four Oaks Crafts



Tools & Supplies

- Saw - power or handsaw
- Jigsaw - for bird hole
- Drill
- Screw driver
- Wood screws (2" #8 Deck)
- Wood glue
- Paint

Construction Notes

- Measure twice and cut once!!!!
- You can get all the wood for the house from a 1" X 12" X 10' board.
- I used southern pine, but you can also use cedar or cypress.
- If you use cedar, you don't need to paint.
- You'll need approximate 25 to 30 wood screws (exterior deck type).
- Pre-drill holes to prevent splitting wood.
- Wear safety gear: safety glasses, hearing protection, dust mask.
- Know how to safely operate your tools - read tool manuals.
- Get help when mounting the screech owl box.